

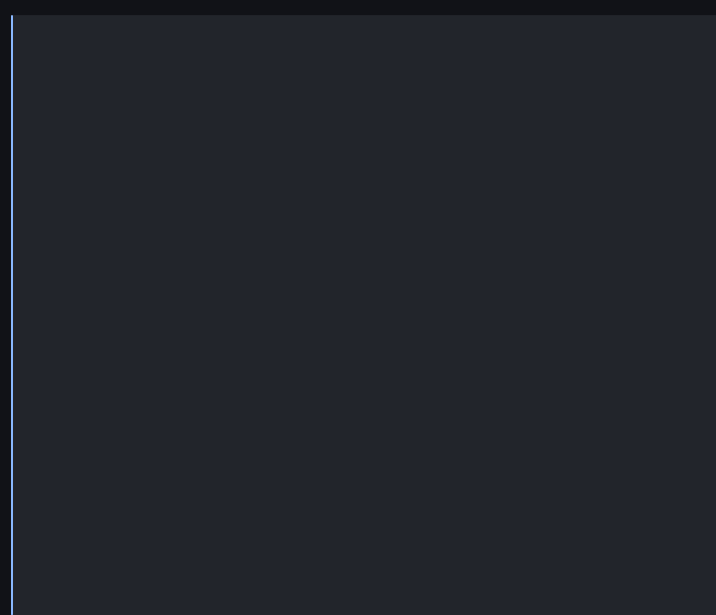
Datos de Vulnerabilidades

Desde: 04-Jan-2024 05:43
Hasta: 04-Jul-2024 05:43

Referencias:

- View in Feeds Hub
- CSIRT Americas's Portal

Top 10: Tecnologías vulnerables



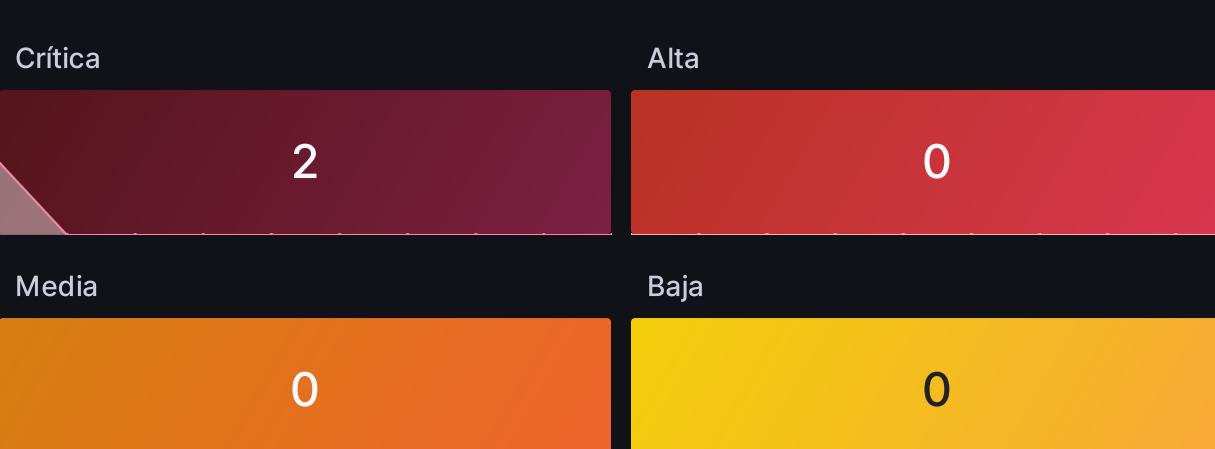
Sistemas vulnerables



Vulnerabilidades detectadas

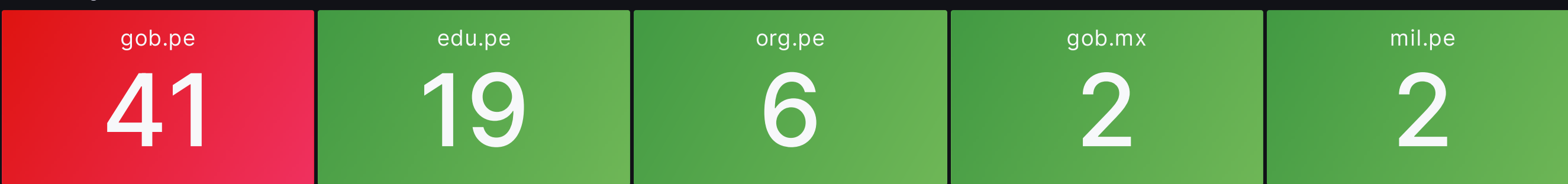


Sistemas vulnerables agrupados por severidad CVSS



Print

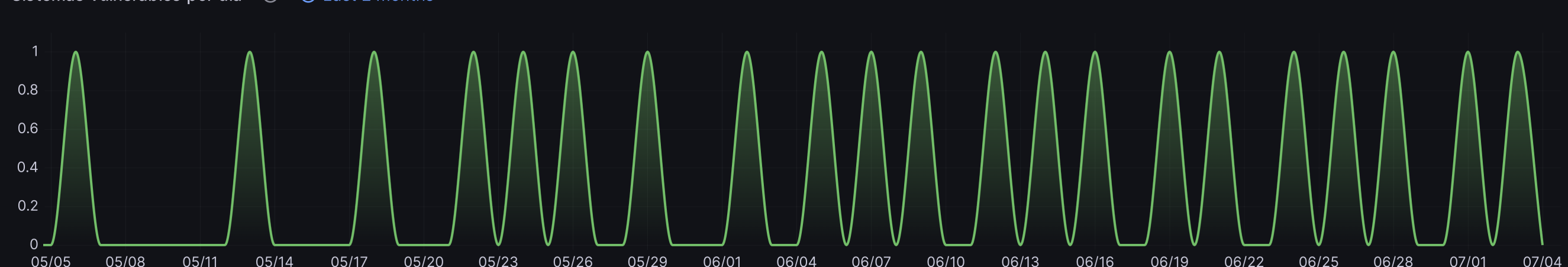
Dominios gubernamentales afectados



Últimos 10 sistemas gubernamentales detectados

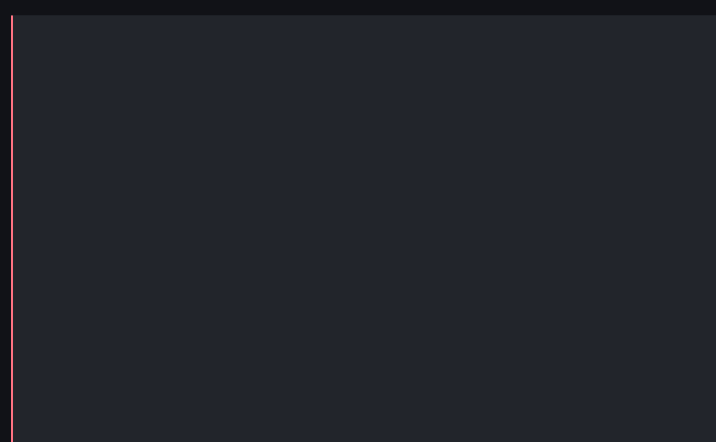
IP	extra_shodan.optio	extra_shodan.optio	extra_shodan.regio	ASN	extra.csirtamericas_	Shodan details	DNS domain	Hostname	ex
177.73.254.230	mesavirtual.region...	2Nm3rKzCDgSr...	na	AS270069	vulnerability	https://www.shod...	["tecnoprojec...	["ip-177-73-2...	[
177.73.254.230	oti.regionsanmarti...	tB7GbhGPdtVbEg...	na	AS270069	vulnerability	https://www.shod...	["tecnoprojec...	["ip-177-73-2...	nu
177.73.254.230	alerta.regionsanm...	bWT7aRxcg8mEJZ...	na	AS270069	vulnerability	https://www.shod...	["tecnoprojec...	["ip-177-73-2...	nu
177.73.254.230	gsobservatorio.re...	j09NdDTFSKj3nKjY	na	AS270069	vulnerability	https://www.shod...	["tecnoprojec...	["ip-177-73-2...	[
177.73.254.230	alerta.regionsanm...	DDcfB7BnWom7E...	na	AS270069	vulnerability	https://www.shod...	["tecnoprojec...	["ip-177-73-2...	nu
177.73.254.230	alerta.regionsanm...	BXIKtFvKH8E2vr5G	na	AS270069	vulnerability	https://www.shod...	["tecnoprojec...	["ip-177-73-2...	nu
177.73.254.230	std.regionsanmarti...	cqNlxLWaAwRPO...	na	AS270069	vulnerability	https://www.shod...	["tecnoprojec...	["ip-177-73-2...	nu
177.73.254.230	oti.regionsanmarti...	UZnyr0PQcdoGS...	na	AS270069	vulnerability	https://www.shod...	["tecnoprojec...	["ip-177-73-2...	nu

Sistemas vulnerables por día



Top 10: Vulnerabilidades

CVE-2015-1635



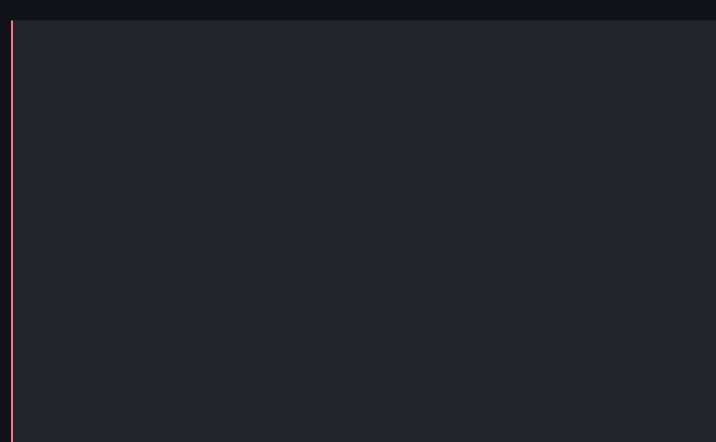
Sistemas vulnerables por semana



Sistemas vulnerables por mes

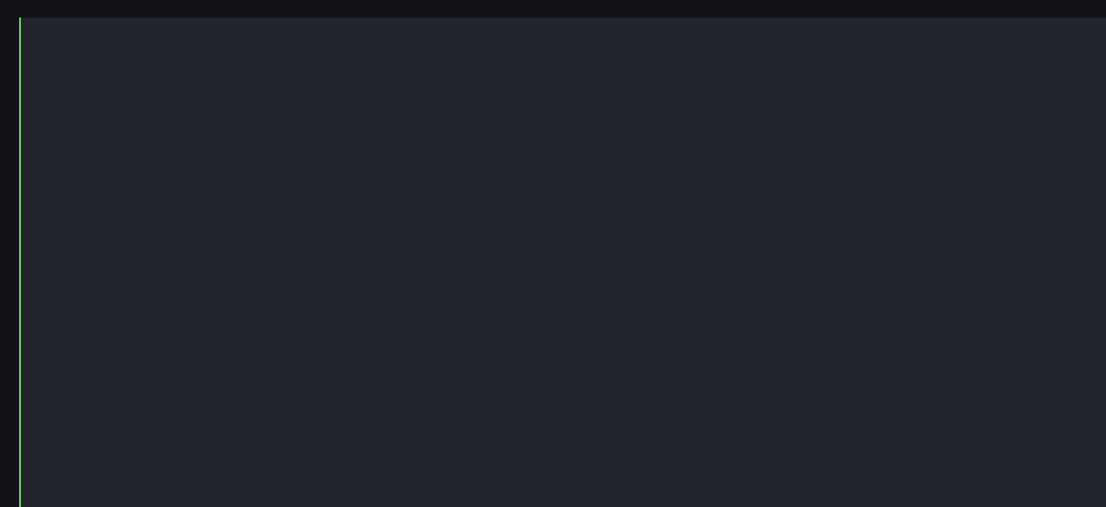


MS15-034



Top 10: Puertos vulnerables

Port: 443



Top 10: Sistemas vulnerables por ciudad

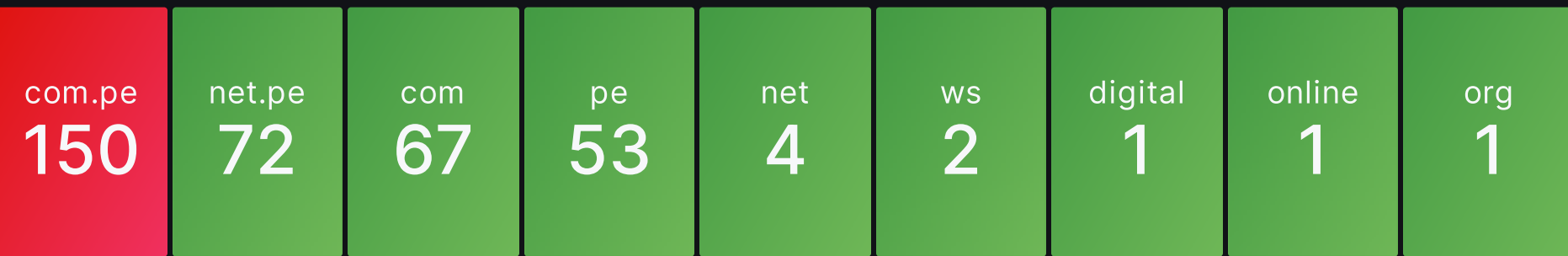
City	# Vulnerable systems
Moyobamba	2

Línea de tiempo: Puertos vulnerables



Details

Dominios no gubernamentales afectados



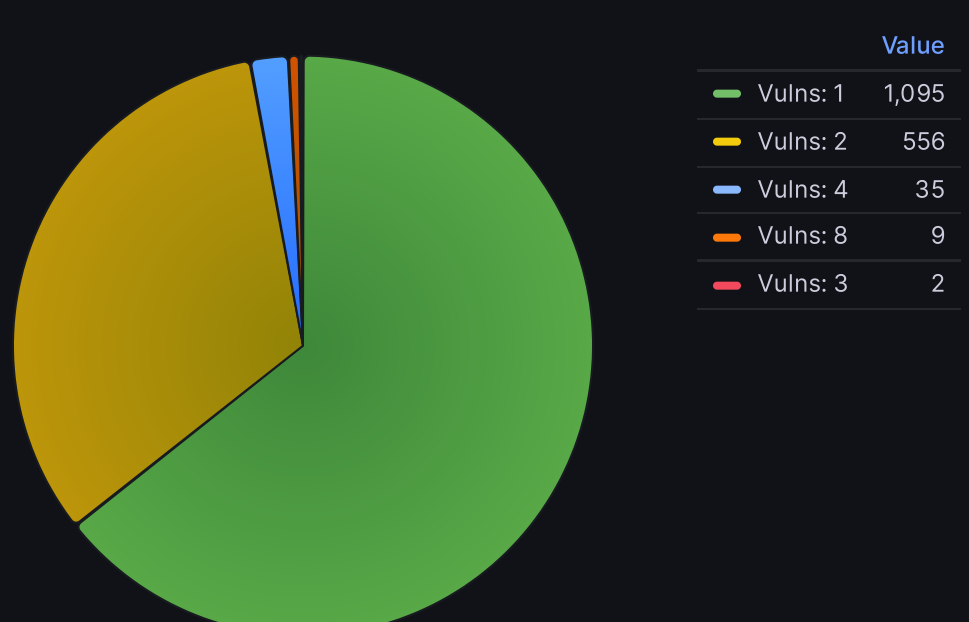
Sistemas vulnerables verificados, agrupados por severidad en el país

CVE	CVSS	Severity	# of servers
CVE-2020-0796	10	Critical	579
CVE-2015-1635	10	Critical	402
MS15-034	10	Critical	402
CVE-2019-0708	10	Critical	271
CVE-2017-7269	10	Critical	41
CVE-2021-26855	9.1	Critical	33
CVE-2021-26857	9.1	Critical	33
CVE-2021-26858	9.1	Critical	33
CVE-2021-27065	9.1	Critical	33
CVE-2021-31206	9.1	Critical	18
CVE-2021-31207	9.1	Critical	18
CVE-2021-34473	9.1	Critical	18
CVE-2021-34523	9.1	Critical	18

Escala CVSS

Severidad	Rango de calificación
Críticas	9.0 - 10.0
Altas	7.0 - 8.9
Medias	4.0 - 6.9
Bajas	0.1 - 3.9
None	0

Servidores por número de vulnerabilidades



Últimos 10 sistemas vulnerables detectados

IP	extra_shodan.optio	extra_shodan.optio	extra_shodan.regio	ASN	extra.csirtamericas_	Shodan details	DNS domain	Hostname	extra.http.compone	extra.http.compone	extra.http.compone	extra.http.compoi
177.73.254.230	mesavirtual.region...	2Nm3rKzCDgSr...	na	AS270069	vulnerability	https://www.shod...	["tecnoprojec...	["ip-177-73-2...	["3.4.1"]	null	["Miscellaneo...	null
177.73.254.230	oti.regionsanmarti...	tB7GbhGPdtVbEg...	na	AS270069	vulnerability	https://www.shod...	["tecnoprojec...	["ip-177-73-2...	null	["JavaScript ...	["Miscellaneo...	["JavaScript
177.73.254.230	alerta.regionsanm...	bWT7aRxcg8mEJZ...	na	AS270069	vulnerability	https://www.shod...	["tecnoprojec...	["ip-177-73-2...	null	null	null	null
177.73.254.230	mesavirtual.region...	X3hsy9YiKBtbnKDj	na	AS270069	vulnerability	https://www.shod...	["tecnoprojec...	["ip-177-73-2...	["3.4.1"]	null	["Miscellaneo...	null
177.73.254.230	alerta.regionsanm...	TgKazjSppRzebQ...	na	AS270069	vulnerability	https://www.shod...	["tecnoprojec...	["ip-177-73-2...	null	null	null	null
177.73.254.230	std.regionsanmarti...	GXFZA6KXDDcGp...	na	AS270069	vulnerability	https://www.shod...	["tecnoprojec...	["ip-177-73-2...	null	null	null	null
177.73.254.230	alerta.regionsanm...	DDcfB7BnWom7E...	na	AS270069	vulnerability	https://www.shod...	["tecnoprojec...	["ip-177-73-2...	null	null	null	null
177.73.254.230	gsobservatorio.re...	j09NdDTFSKj3nKjY	na	AS270069	vulnerability	https://www.shod...	["tecnoprojec...	["ip-177-73-2...	["4.1.1"]	null	null	null
177.73.254.230	gsobservatorio.re...	iNsNJaUmGJHIC...	na	AS270069	vulnerability	https://www.shod...	["tecnoprojec...	["ip-177-73-2...	["4.1.1"]	null	null	null
177.73.254.230	seguimiento.regio...	2xHEhdad5Ha49P...	na	AS270069	vulnerability	https://www.shod...	["tecnoprojec...	["ip-177-73-2...	null	null	null	null